

Waste service information

A range of service information has been compiled to support the main reporting including:

- Figure 1 - 3 historical and current data on waste tonnages received by CRC
- Figure 4 - 6 historical and current data on car visitors to CRCs
- Figure 7 - 11 historical and current data on incidents of fly-tipping and tonnages of fly-tipping collected by District and Borough council
- Map 1 - Current CRC Weekday Inter Peak (10 am to 4pm) Average Drive Times
- Map 2 - projected journey times to recycling centres based on recommendations to the Cabinet
- Map 3 - Major expected housing growth by 2030/31 (*taken from the Surrey Infrastructure Study*)

Please see below for more information

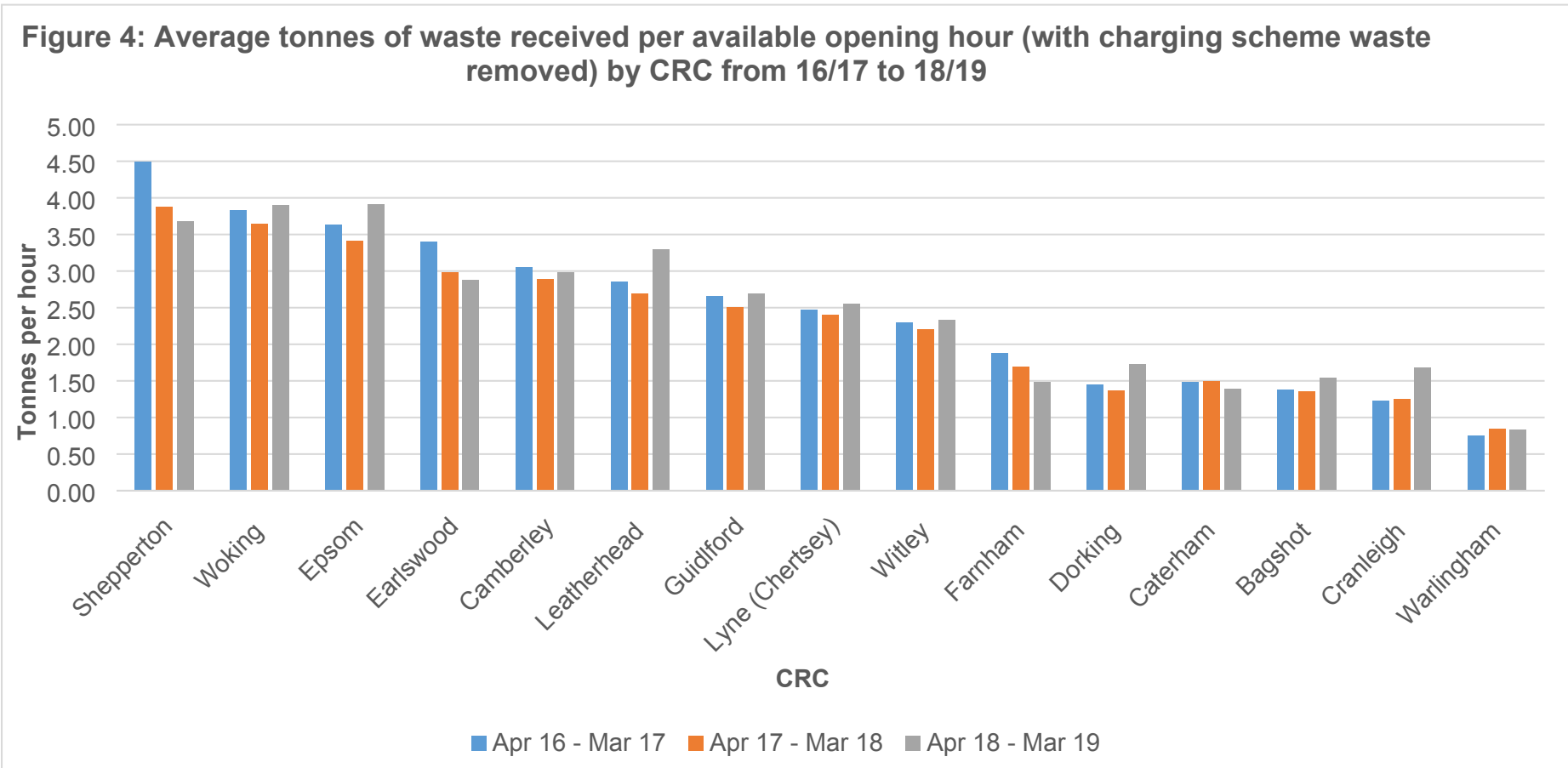
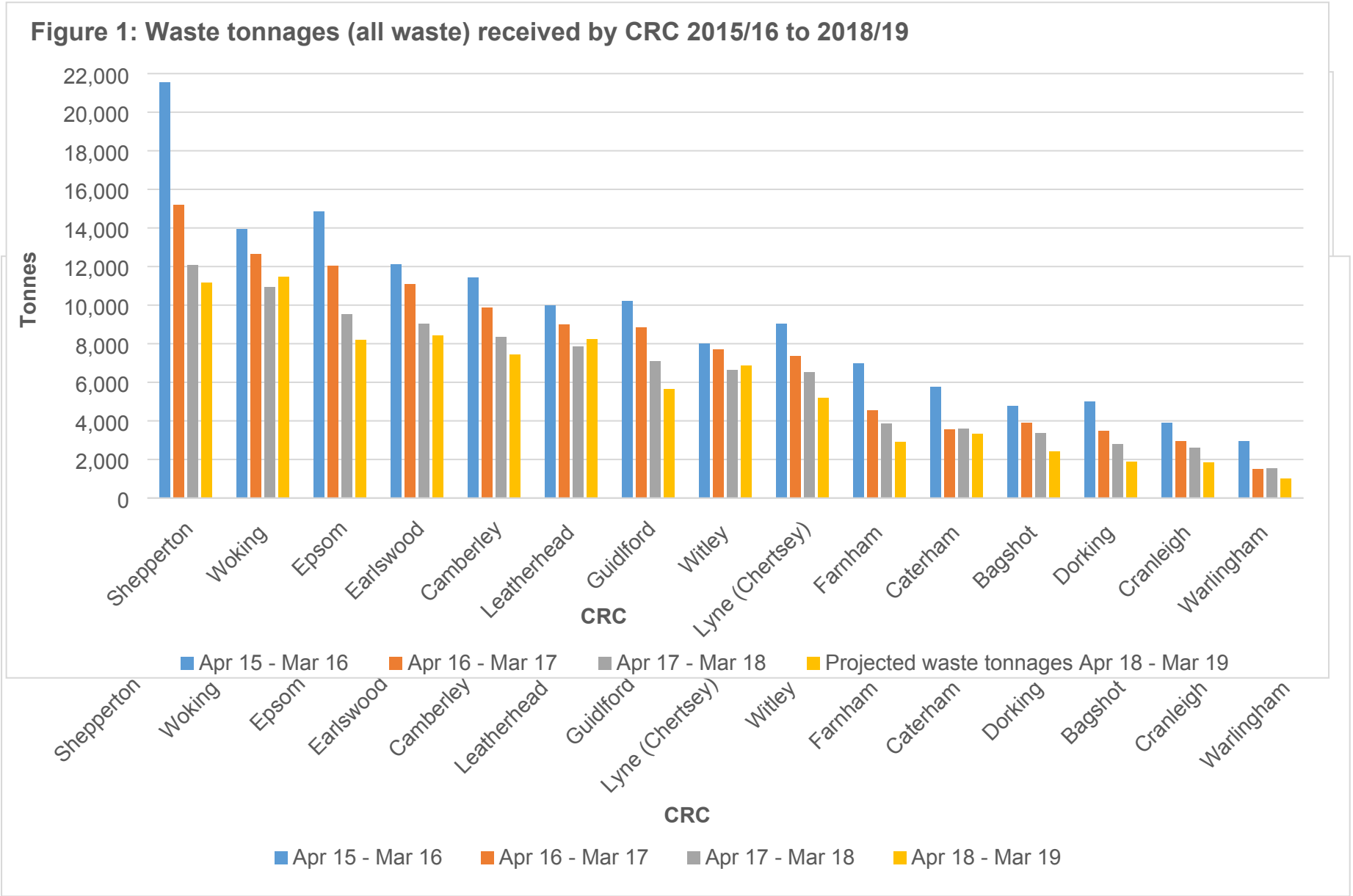


Figure 6: Average car visits per opening hour by CRC 2015/16 to 2018/19

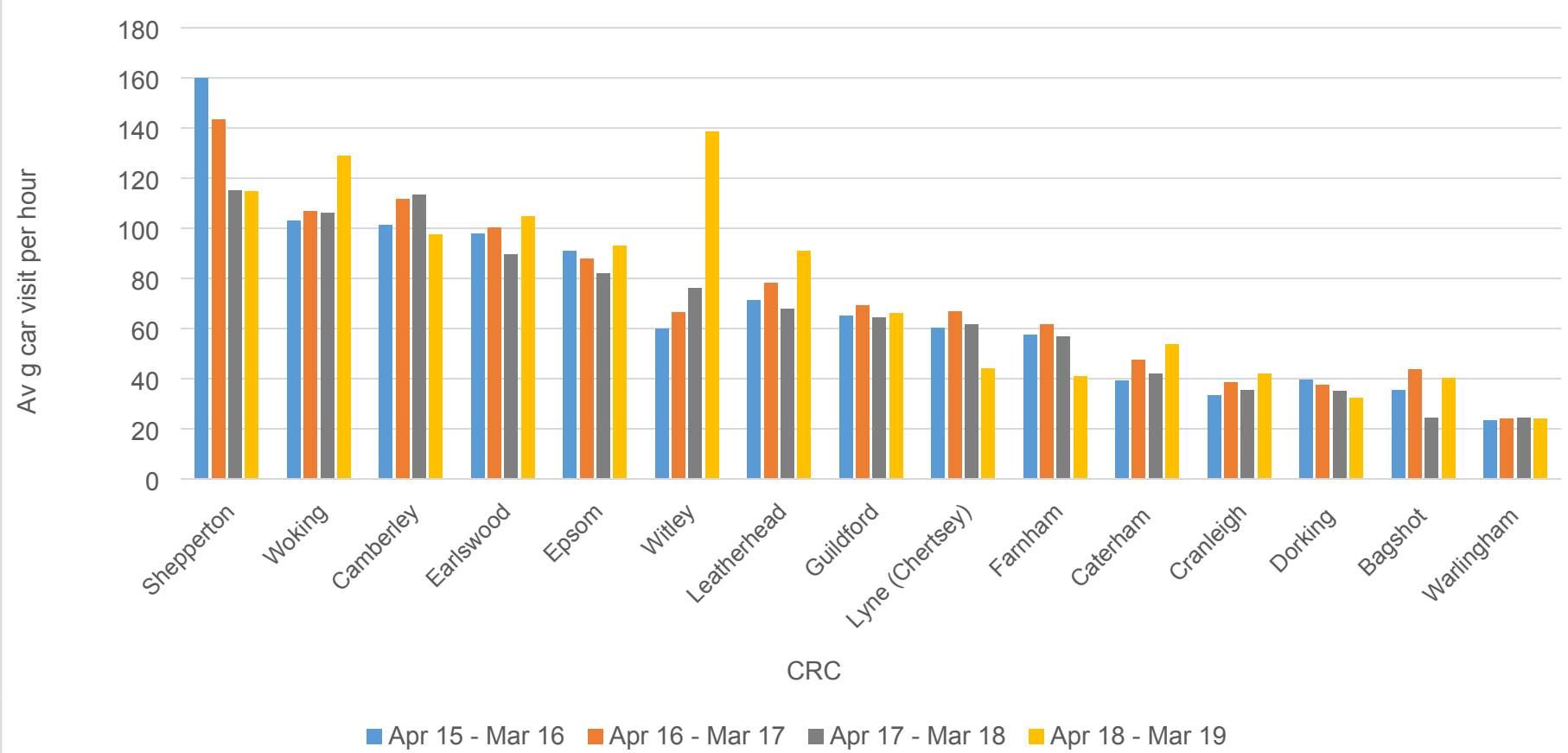


Figure 7: Number of fly-tipping incidents reported in each District and Borough 2014/15 to 2017/18

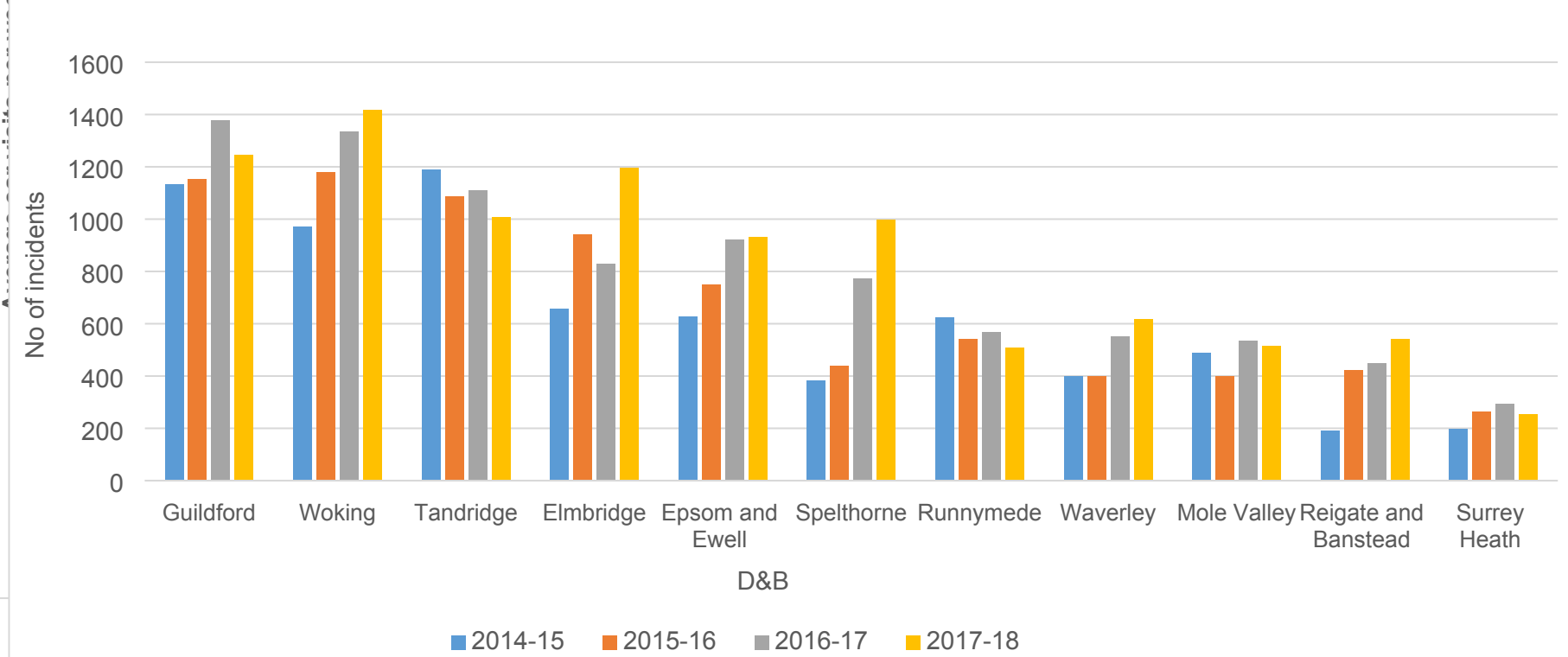


Figure 8: Number of tyre related fly-tipping incidents reported in each District and Borough 2014/15 to 2017/18

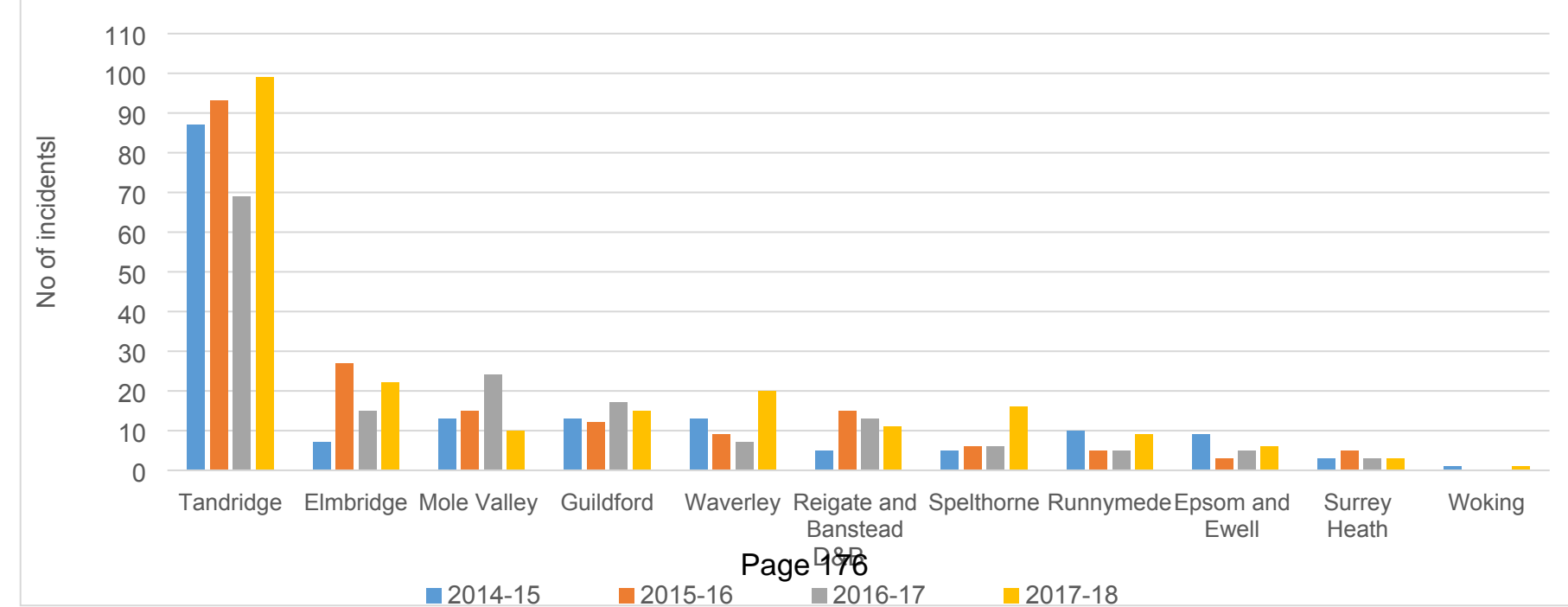


Figure 9: Number of construction related fly-tipping incidents reported in each District and Borough 2014/15 to 2017/18

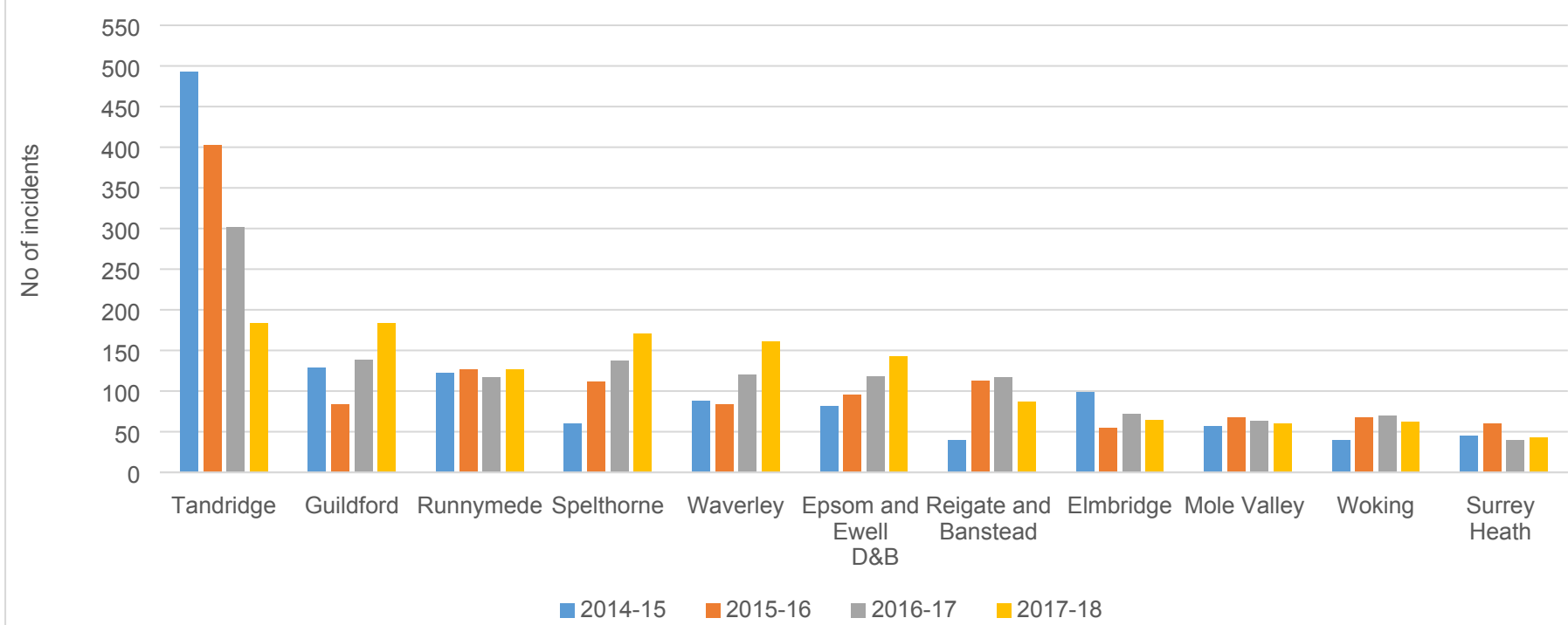


Figure 10: Fly-tipping tonnages collected by District and Borough Councils for disposal at Surrey’s Waste Transfer Stations 2015/16 to 2017/18

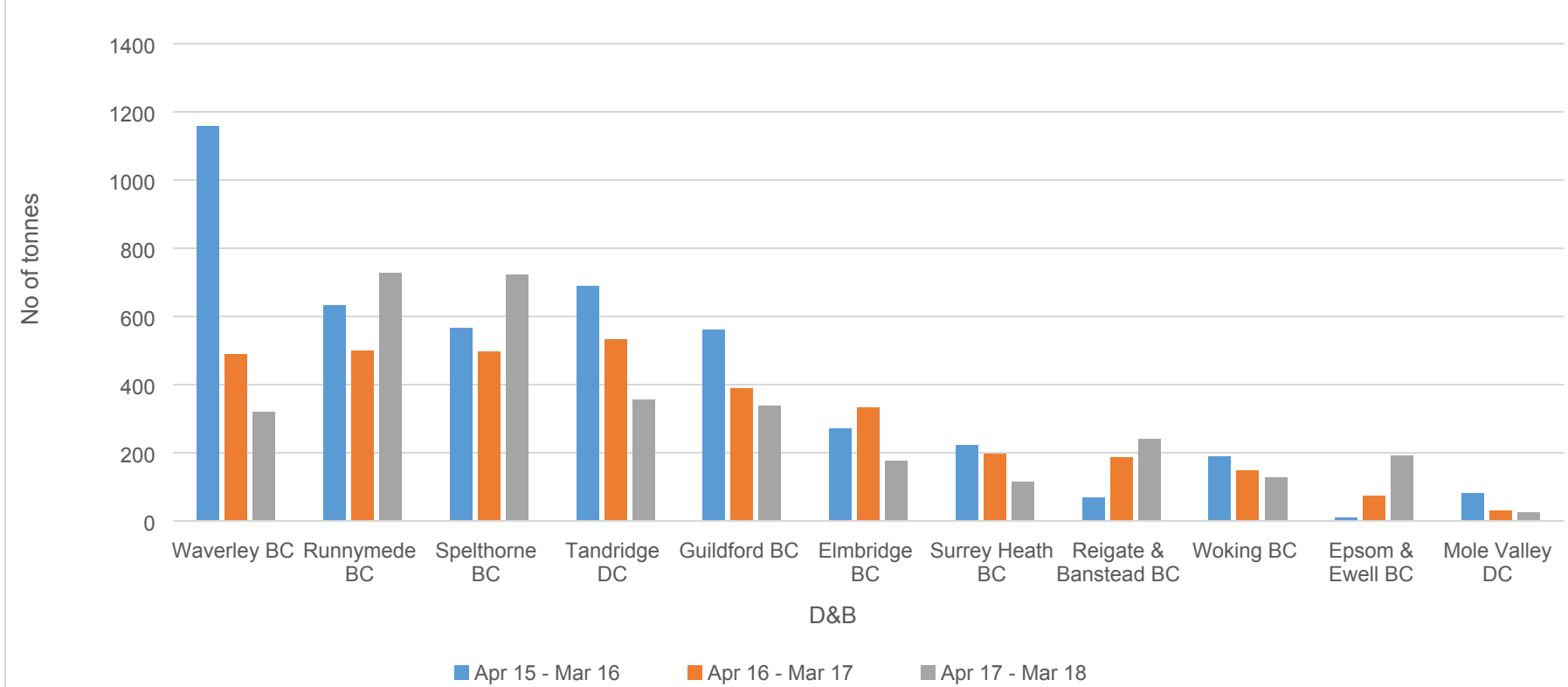
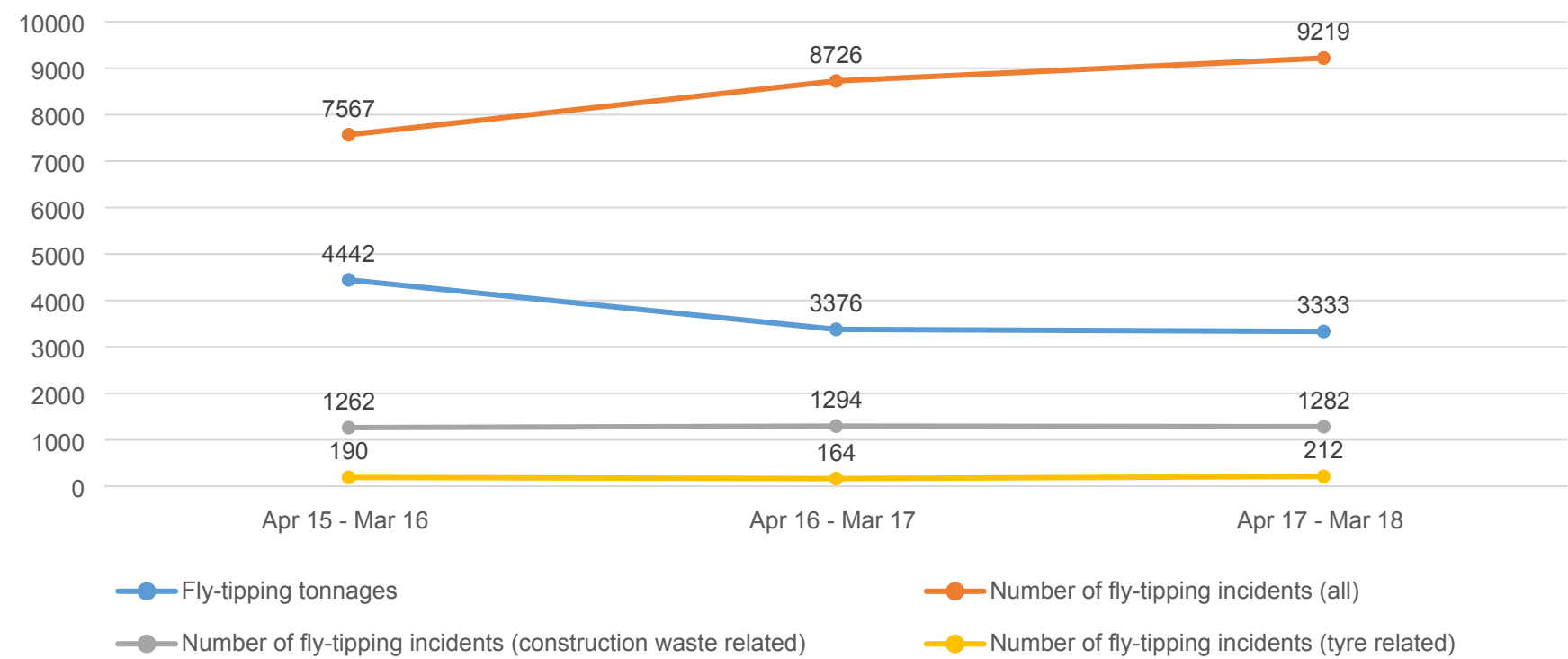
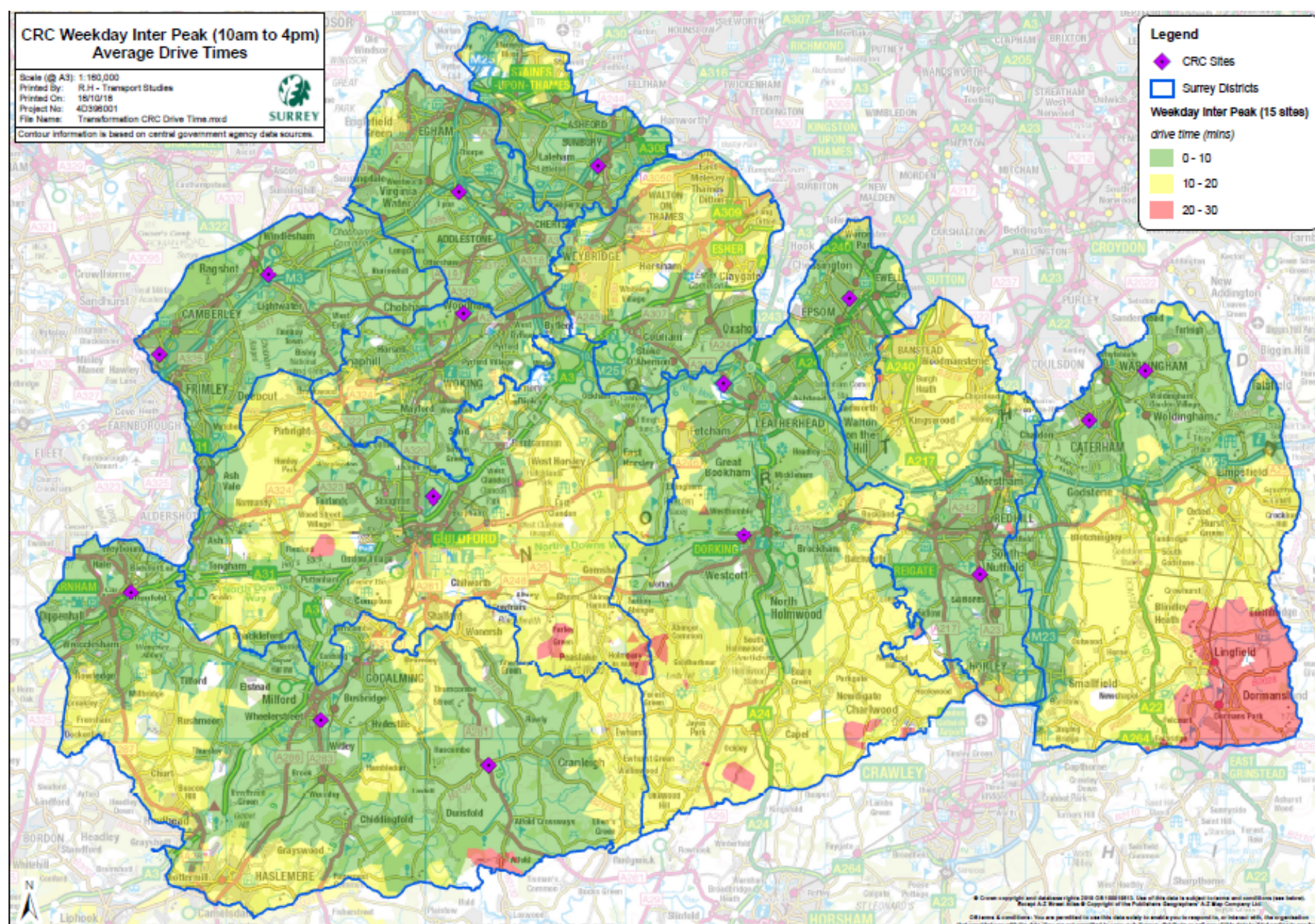


Figure 11: Annual fly-tipping tonnages compared against annual fly-tipping incidents 15/16 to 17/18

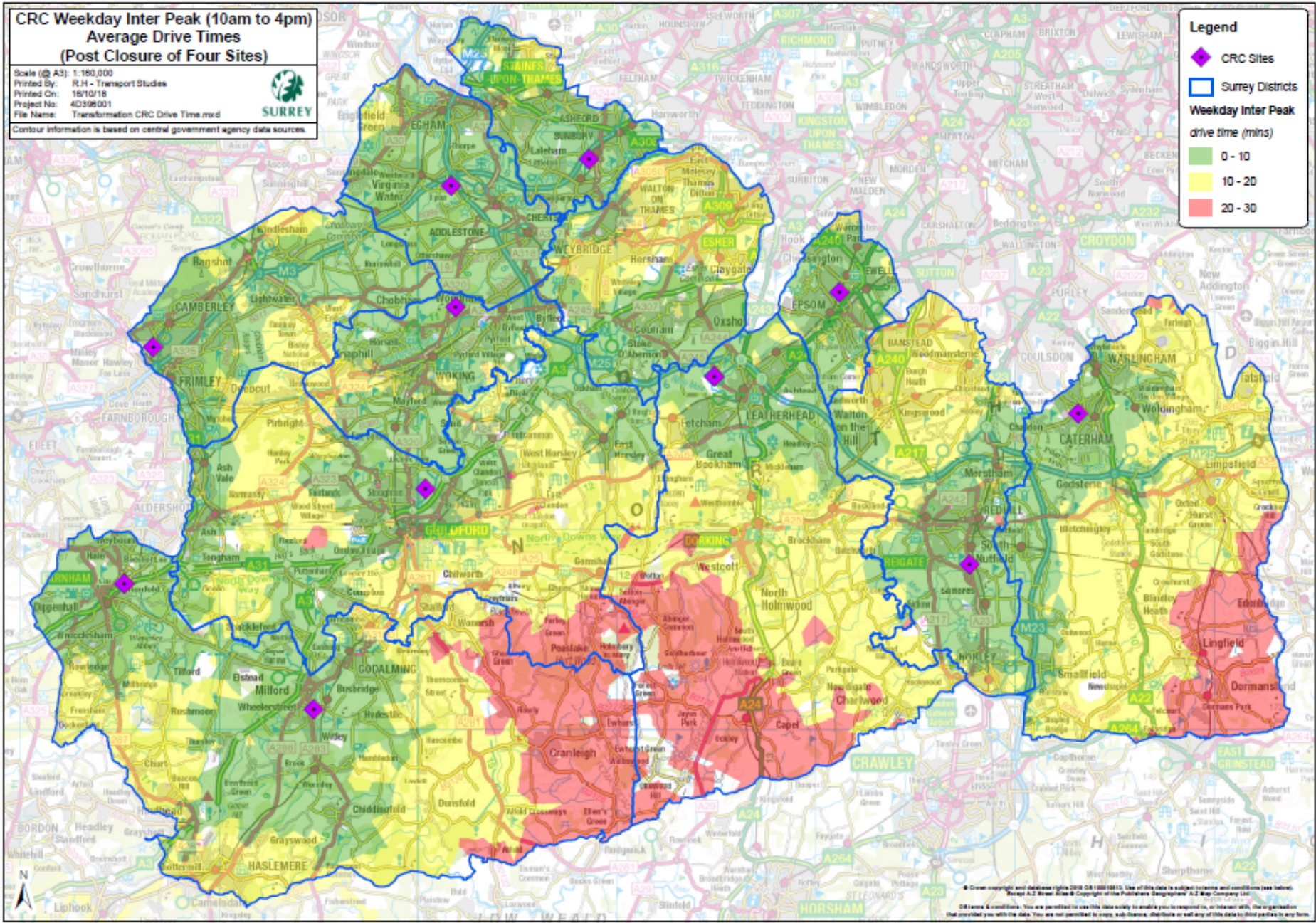


Map 1: Current CRC Weekday Inter Peak (10 am to 4pm) Average Drive Times



Drive Times	Number of households	Percentage of total
0 to 10	343,995	70.6%
10 to 20	130,486	26.8%
20 to 30	2,983	0.6%
Plus 30	9,475	1.9%
Totals	486,939	100.0%

Map 2: Projected CRC Weekday Inter Peak (10 am to 4pm) Average Drive Times (4 sites in Bagshot, Cranleigh, Dorking and Warlingham closed)



Drive Times	Number of households	Percentage of total
0 to 10	316,470	65.0%
10 to 20	148,547	30.5%
20 to 30	11,992	2.5%
Plus 30	9,930	2.0%
Totals	486,939	100.0%

Map 3 – Major expected housing growth by 2030/31 (taken from the Surrey Infrastructure Study)

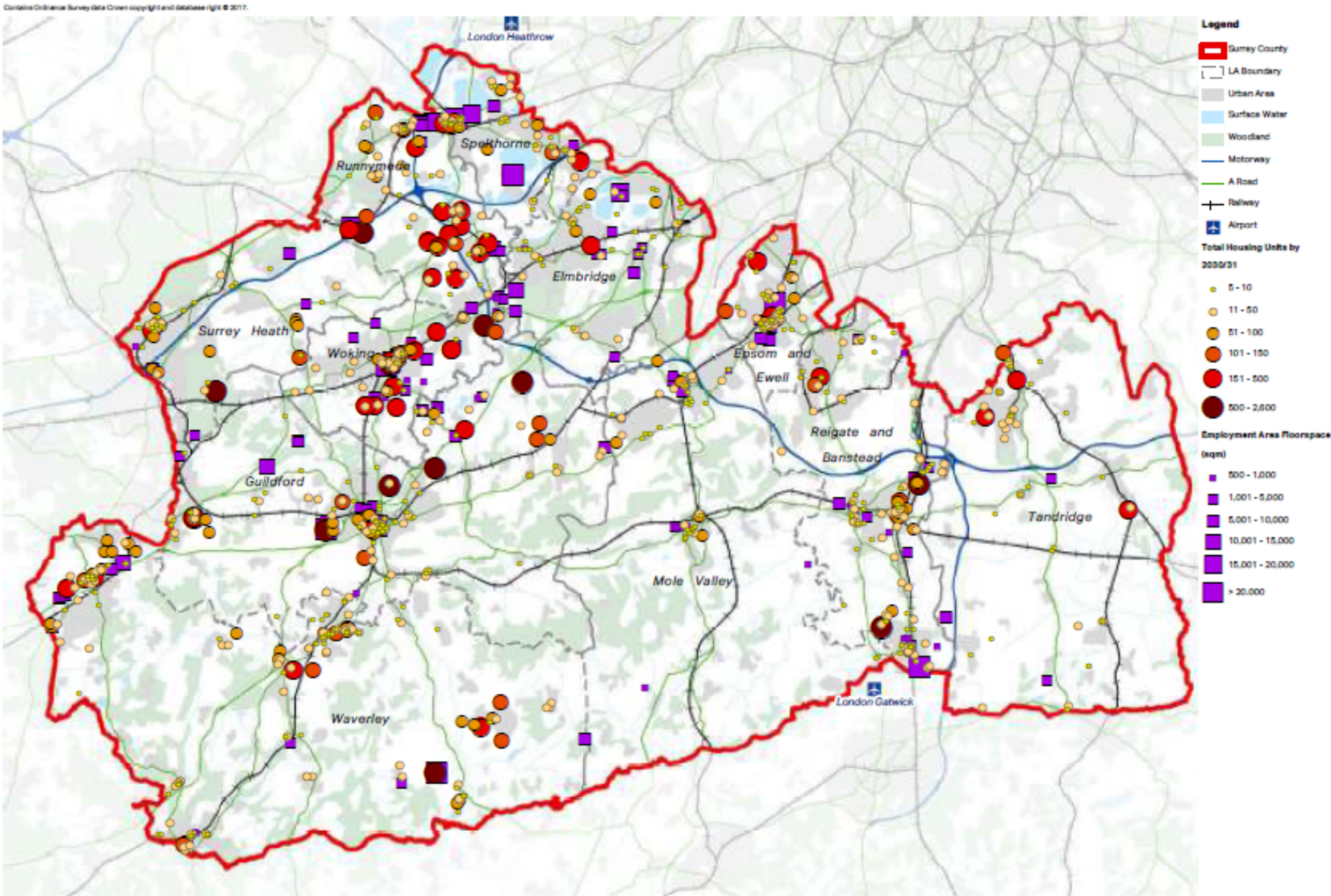


FIGURE A - STUDY AREA AND MAJOR HOUSING/EMPLOYMENT SITES

* This is based on the most up to date information at the time of publication and could be subject to change, subject to review of planning policy documents
Source: Local Authority data